

Doors

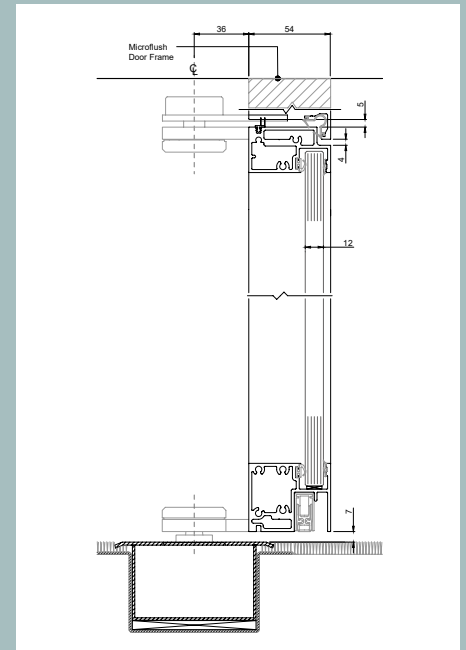
Product Summary



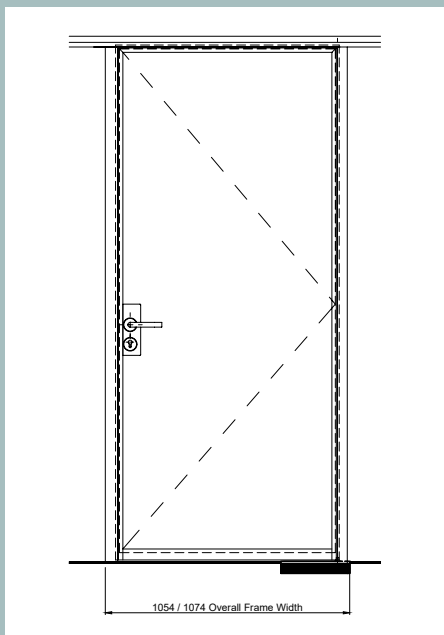
Optima
ClearThinking

Product facts

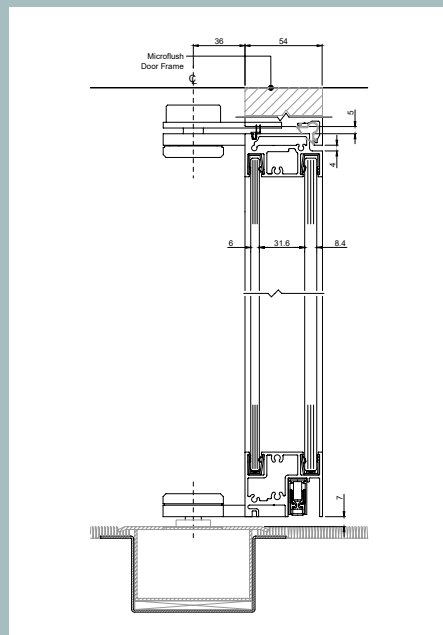
- Wide range of door options
- Edge series of glass doors - Symmetry and Affinity
- Axile series of glass doors - Pulse and Clarity
- Timber doors - 44mm thick non-rebated or 54mm thick rebated in Microflush aluminium door frame
- Maximum door height 3000mm
- Numerous ironmongery and locking options for each door type
- Manufactured at Optima's UK factory in Bath



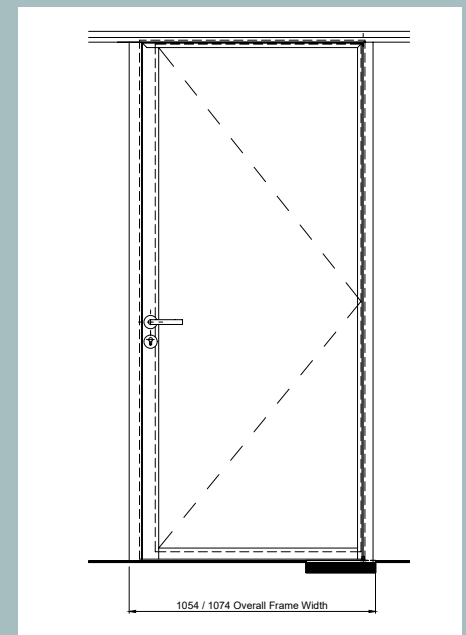
Section through single glazed EDGE Symmetry door on offset pivots



Elevation showing EDGE Symmetry door on offset pivots. Part M compliant clear opening



Section through double glazed EDGE Affinity door on offset pivots



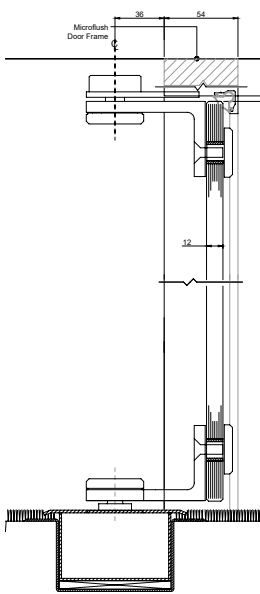
Elevation showing EDGE Affinity door on offset pivots. Part M compliant clear opening

Acoustics - glass doors

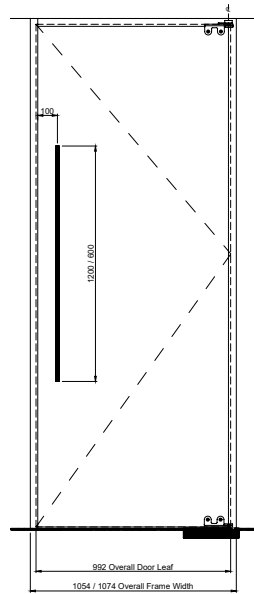
- Edge Symmetry:
single glazed - Rw35dB;
double glazed - Rw41dB
- Edge Affinity:
single glazed - Rw39dB;
double glazed - Rw42dB
- Axile Clarity:
single glazed - Rw32dB

Acoustics - timber doors

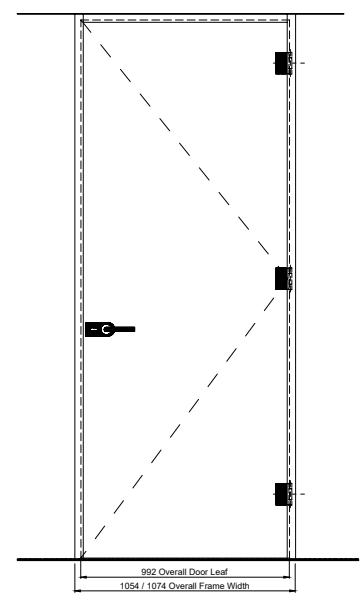
- 44mm thick timber door in
Microflush frame - Rw31dB
- 54mm thick timber door in
Microflush frame - Rw33dB



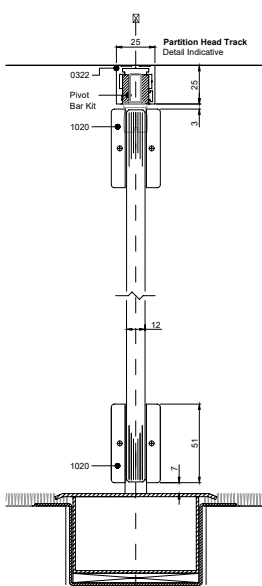
Section through typical AXILE Clarity door with quad pivot in Microflush frame



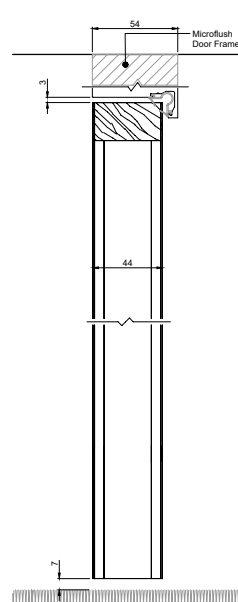
Elevation showing typical AXILE Clarity door with quad pivot in Microflush frame. Part M compliant clear opening



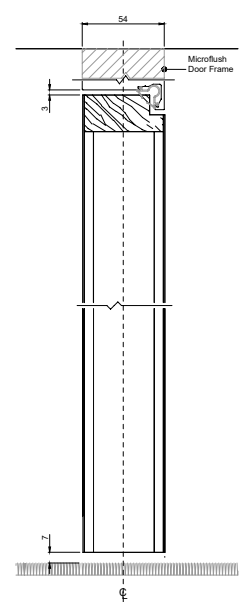
Elevation showing typical Microflush frame with AXILE Clarity hinged door. Part M compliant clear opening



Section through typical AXILE Pulse door



Elevation showing typical 44mm thick hinged timber door in Microflush frame. Part M compliant clear opening



Section through typical 54mm thick hinged timber door in Microflush frame

Product overview

System type	<p>Edge Series: Symmetry and Affinity - single or double glazed framed pivoting glass doors</p> <p>Axile Series: Pulse and Clarity - single glazed frameless glass doors</p> <p>Timber Doors: 44mm thick non-rebated and 54mm thick rebated timber door in Microflush aluminium frame</p>
Glass thickness	<p>Edge Series: Single glazed Symmetry - 12mm heat soaked toughened glass Double glazed Symmetry - 6mm + 8mm heat soaked toughened glass Single glazed Affinity - 12.8mm acoustic laminated glass Double glazed Affinity - 6mm heat soaked toughened glass + 8.8mm laminated glass</p> <p>Axile Series: Pulse - 12mm heat soaked toughened glass Clarity - 12mm heat soaked toughened glass</p>
Frame dimension	<p>Edge Series: Symmetry - 54mm Microflush aluminium door frame; door leaf frame 30mm lockable stile with 18mm visible framework on corridor side when door is in closed position Affinity - 54mm Microflush aluminium door frame; door leaf frame 66mm lockable stile with 67mm visible on the corridor side when door is in closed position</p> <p>Axile Series: Pulse - no frame Clarity - frameless door leaf within 54mm Microflush aluminium door frame</p> <p>Timber Doors: 54mm Microflush aluminium door frame</p>
Lock options	<p>Edge Series: Dead lock, sash lock or latch</p> <p>Axile Series: Patch lock or lockable pull handle</p> <p>Timber Doors: Dead lock, sash lock or latch</p>
Hanging options	<p>Edge Series: Offset pivot</p> <p>Axile Series: Pulse - floor spring with inline pivot Clarity - stainless steel lift-off hinges or stainless steel Quad offset pivots</p> <p>Timber Doors: 44mm – stainless steel butt hinges 54mm – stainless steel butt hinges or stainless steel offset pivot</p>
Maximum height	3000mm
Acoustic rating	<p>Edge Series: Rw35dB - single glazed Symmetry door in Microflush frame Rw41dB - double glazed Symmetry door in Microflush frame Rw39dB - single glazed Affinity door in Microflush frame Rw42dB - double glazed Affinity door in Microflush frame</p> <p>Axile Series: Rw32dB - Clarity door in Microflush frame with threshold seal</p> <p>Timber Doors: Rw31dB - 44mm timber door in Microflush frame with drop seal Rw33dB - 54mm rebated timber door in Microflush frame with drop seal</p>
System compatibility	All door types, with the exception of Axile Pulse, are compatible with Optima's entire range of glass partitioning systems. Axile Pulse is designed for use with Optima 117 Plus single glazing only.

Optima

Courtyard House
West End Road
High Wycombe
Buckinghamshire
HP11 2QB

t +44 (0) 1494 492 725
www.optimasystems.com